



# SMART BORDER SOLUTION

## ENHANCING FRONTLINE SECURITY



## Operational Challenges

National borders are crucial for maintaining a nation's sovereignty, regulating movement, and ensuring security. They serve as the first line of defense against potential threats, including illegal immigration, smuggling, trafficking, and terrorism. Safeguarding these borders, both at checkpoints and along the perimeter, is a complex task. Checkpoints require rigorous screening procedures to prevent illicit activities, while the vast and diverse terrain along the perimeter demands advanced surveillance technology for effective monitoring. The geographical and weather-related challenges further complicate these efforts. Therefore, robust, and comprehensive strategies are essential for effective border management and national security.

## Solution Description

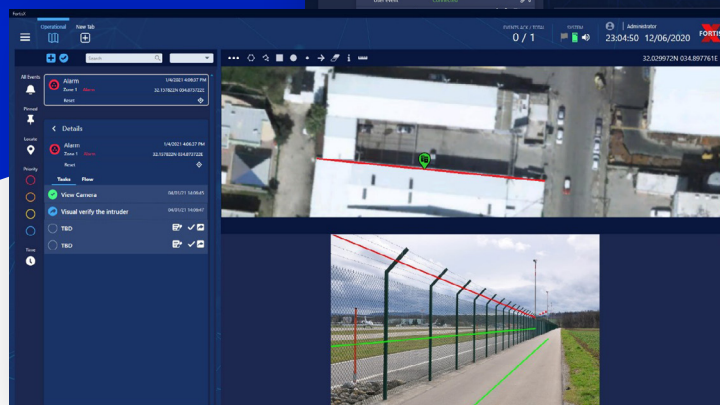
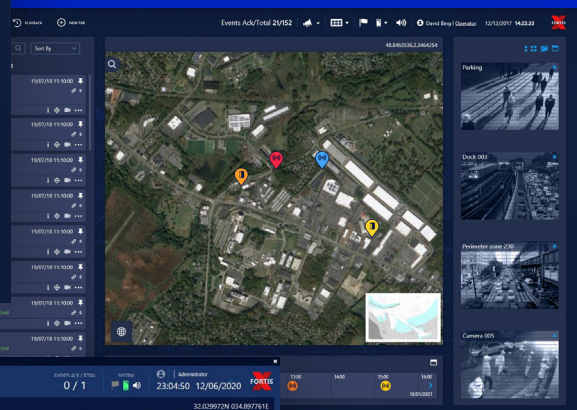
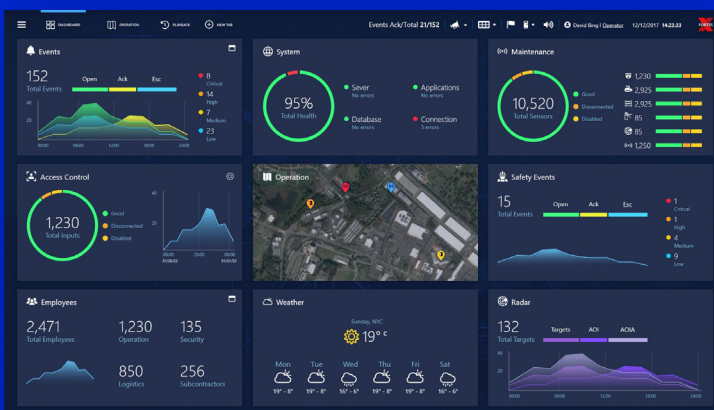
Magal provides comprehensive border solutions, tailored to navigate the complexities of safeguarding national borders. Proven daily on the frontline of the Israeli border, Magal's borders solution integrates security, intelligence, and state-of-the-art technologies, designed to identify, deter, and intercept various threats to both physical and virtual borders, in every terrain and under any condition. By collecting, analyzing, and fusing real-time data, we provide rapid, efficient responses to any border incident and effective deterrence of suspicious activities, to ensure the utmost protection for national borders.





# Technical Capabilities:

- 1. Integrated Surveillance Network:** Implement an advanced surveillance network that combines multiple technologies to provide comprehensive coverage of the national borders.
- 2. Day & Night Surveillance:** Implement high-resolution CCTV cameras at key locations for continuous monitoring and recording of activities, enhanced with thermal imaging technology to ensure detection of human presence under all light conditions and weather scenarios.
- 3. Radar Systems:** Deploy radar systems to detect and track unauthorized vehicles, boats, or aircraft attempting to cross the border.
- 4. Perimeter Intrusion Detection:** Implement sensors and intelligent algorithms to detect and notify border patrol agents of any unauthorized attempts to breach the border fence or cross the border.
- 5. Biometric Identification:** Use biometric technologies, such as fingerprint or facial recognition systems, to verify the identity of individuals at designated checkpoints.
- 6. Drones and UAVs:** Utilize unmanned aerial vehicles (UAVs) equipped with cameras and sensors to patrol and monitor remote areas, providing additional situational awareness.
- 7. Data Integration and Analytics:** Integrate data from various sources, such as CCTV cameras, radar systems, and biometric scanners, and employ analytics to identify patterns, detect anomalies, and facilitate decision-making.
- 8. Surveillance and Intelligence:** Real-time monitoring and sophisticated data analysis, providing operational and actionable insights for immediate threat detection and response.
- 9. Cyber Security:** Fortified digital protection to identify potential cyber risks, ensure secure communication and data integrity, enabling immediate risk mitigation and uninterrupted border operations.
- 10. Communication and Command Centers:** Establish centralized command centers equipped with advanced communication systems to coordinate operations, share real-time information, and enable swift response to potential threats.



## Solution Benefits



**Fortified Security Measures:** Protecting national borders requires a multi-faceted approach that prioritizes immediate threat detection and deterrence. Our solutions ensure that every part of the border is under vigilant watch, deterring unauthorized activities and ensuring swift responses to potential breaches.

- Improved Situational Awareness and comprehensive visibility.
- Timely Threat Detection enabling prompt identification of breaches, threats, and risks.
- Deterrence and Prevention of potential border violations.
- Enhanced Border Control and biometric identification, reducing the risk of fraudulent entry or illegal immigration.



**Operational Efficiency & Continuity:** Efficient border management goes beyond just surveillance; it's about optimizing resources and ensuring seamless coordination. Our integrated systems prioritize real-time communication and resource allocation, ensuring optimized operation.

- Efficient Resource Allocation identifying high-risk areas, patterns, and trends.
- Rapid Response, Coordination and real-time information sharing enabled by centralized command centers.



**Intelligence and Data Analysis:** Data-driven insights are crucial for proactive border management. Our advanced analytics dive deep into data patterns, offering actionable insights that empowers authorities to make informed decisions and anticipate potential threats.

- Data Integration for comprehensive, actionable insights.
- Analytics to identify patterns, detect anomalies, and facilitate decision-making.

In February 2021, Magal was acquired by Aeronautics Ltd., a subsidiary of RAFAEL Advanced Defense Systems Ltd. The integration of Magal into Rafael Defense Group as its Homeland Security solution Integrator marks a strategic alliance, designed to enhance the group's comprehensive defense strategy, and ensure Israel's national security.