

# Fortis X, C5I

Experience the  
Power of Seamless  
Integration

Fortis X is a cutting-edge technology designed to manage daily operations as well as emergency site activity. Using the latest IT technologies and communication protocols, it provides operators from various departments throughout any site with flexible, effective management toolset, and control of all subsystems and sensors.



In a complex environment, each system has its own interface and operators must frequently switch between applications, which slows them down and prolongs their task lists. Most systems execute hundreds of command sequences for each required activity, which also increases response times to alerts and threats, enhancing the risks.

Fortis X fuses data from multiple on-site subsystems and displays it in a single, user-friendly interface with bidirectional connectivity. Operators can run multiple third-party systems simultaneously and automate procedures, while reducing response time and staying focused on the task at hand.

Fortis X's integration method is unique and allows customers to connect to an infinite number of subsystems and sensors in real time, creating a unified eco-system that provide safe, efficient, and seamless site operations.

# Features & Capabilities

## Manage and control third-party subsystems:

- Data fusion from any subsystem and sensor to achieve real-time situational awareness.
- Unified incident management interface, enhancing seamless site operations.

## Analyze incidents and alerts:

- Immediate incident detection, analysis, classification, and alerts to relevant units.
- Instant incidents responses, triggering automated pre-defined rules and procedures.

## Automated workflow

- Rapid tasks assignment using pre-defined rules engine and procedures based on security protocol and daily site operations.
- Automated task list generation based on incident characteristics and site protocols.

## Communication

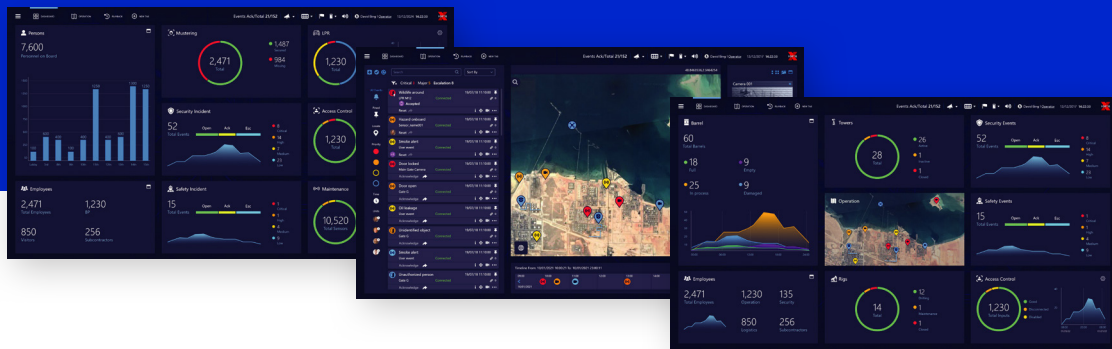
- Quick first responders dispatching via powerful GIS geolocation technology.
- Map navigation and pinpointing according to incident classification.

## Mobile Application

- Efficient management of resources, personnel allocation, communications, and first responders.
- Accurate and dynamic decision-making process in real-time.

## Enhance operations:

- Customized reports generation, operational graphs and charts on demand for efficient debriefing and compliance.
- "Simulation mode" for personnel onboarding and routine training.



# Benefits

## Operational efficiency

- Seamless operations of third-party systems, safety platforms, resources, and mobile units.
- Analyzed performance KPIs & reports for efficient and effective decision making.

## User-Friendly Operation

- Versatile, efficient, and simple management toolset for fluent, seamless operations.

## Multiple map formats

- Advanced GIS engine for geo-located display of all sensors and devices throughout the site.

## Automatic pointing

- Instant focus on "hot" areas and incidents' locations via automatic detection of cameras and other optical equipment.
- Rapid and organized evacuation protocols and safety lockdown procedures.

## Mobile platform

- Monitoring, operating, and reporting capabilities via hand-held devices.

## Data mining

- Swift, data-driven decision-making process, powered by embedded IVA (Video Analytics) and Business Intelligence (BI).

## Data Fusion

- Actionable insights generated by multiple databases fused across platforms from various subsystems.

## Dashboards and widgets

- Simple data and video summaries per user.

## Collaboration

- Complete collaboration of cross-regional command and control units, broadcasting and sharing incidents, GIS data and video footage